

THE COLOR'S THE SAME,



THE PERFORMANCE ISN'T.

NOT ALL SEED TREATMENTS ARE CREATED EQUAL: KNOW WHAT'S ON YOUR SEED

When yield and performance are on the line, you want to be in the winner's circle. When it comes to performance, comparing competitor and generic seed treatments to CruiserMaxx[®] Vibrance[®] Beans seed treatment, a combination of separately registered products, is like comparing a race car with a sedan. CruiserMaxx Vibrance Beans delivers broad-spectrum protection against damaging early-season insects and diseases, and is the **only** seed treatment that offers the unique RootingPower of Vibrance and the Cruiser[®] Vigor Effect.

Why CruiserMaxx Vibrance Beans?

- Optimizes root health, stress tolerance and plant vigor for better emergence; delivers faster speed to canopy and nutrient uptake for improved overall performance
- Helps reduce the risks that come with early-season insect and disease pressure, delivering best-in-class performance for establishing a high stand count vs. competitor seed treatments and generics
- Available as a stable, engineered premix formulation, enhancing convenience
- Helps reduce the risks of replants and the associated costs
- Delivers returns of \$16,200 more than Acceleron[®] Standard, \$7,420 more than Intego[™] Suite and \$10,780 more than untreated*

Considering generics?

Check under the hood.

Poorly formulated generic blends can lead to product separation and reduced stability due to incompatibility.

This can cause **application challenges**, including **buildup** in treating equipment and **poor coverage** on treated seeds.

CruiserMaxx Vibrance Beans provides the strongest start to the season and the highest historical yields at harvest.

VICTORY LANE FOR PERFORMANCE AND HANDLING

CruiserMaxx Vibrance Beans leads over generic custom blends.

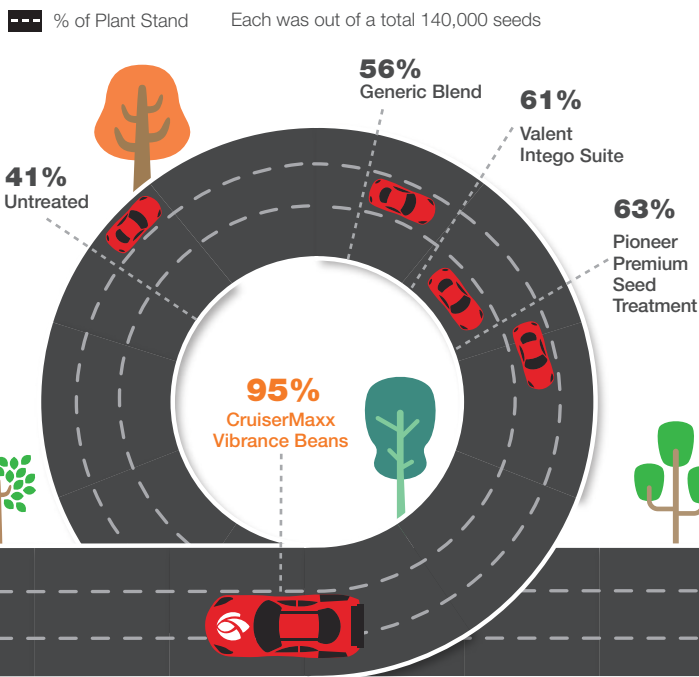
- ☼ Reliable field performance due to consistent dose of active ingredients on the seed
- ☼ Extended shelf life
- ☼ Evaluated for quality and performance through exposure to a battery of tests simulating real-world application, storage and environmental conditions
- ☼ Contains unique polymers that bind active ingredients to the seed coat, reducing dust off and improving seed flow, the exact recipe of which isn't available in generic or custom blends
- ☼ Provides protection from key insects and diseases, including:
 - Soybean aphid, bean leaf beetle, grape colaspis, leafhopper, seedcorn maggot and more
 - Early-season *Phytophthora*, *Pythium*, *Rhizoctonia*, *Fusarium*, seedborne *Sclerotinia* (white mold) and seedborne *Phomopsis*

CRUISERMAXX VIBRANCE BEANS DELIVERS THE INDUSTRY-LEADING ROI*

Performance is important. Know what's under the hood, and don't settle for anything but the best seed treatment for your field. **What's on your seed? Ask your retailer or seed treater today.**

	CruiserMaxx Vibrance Beans	Acceleron Standard	Intego Suite
Average yield	62.8	61	61.9
Average over untreated	2.8	1	1.9
Revenue/acre	\$596.60	\$579.50	\$588.05
ROI/1,000 acres	+\$10,780	-\$5,420	+\$3,360

PLANT STAND 28 DAYS AFTER PLANTING UNDER SIGNIFICANT DISEASE PRESSURE



ONLY CRUISERMAXX VIBRANCE BEANS CONTAINS THE ROOTINGPOWER OF VIBRANCE



Syngenta trials, 2017, Kinston, North Carolina

2016 Syngenta Seedcare inoculated Trials (n=3). Combined protection across uninoculated, *Pythium* spp. & *Rhizoctonia solani*. Bay, Arkansas.

*Calculations based on commodity price of \$9.50/A. Product pricing based on published suggested grower price per unit: CruiserMaxx Vibrance Beans: \$14.00/unit; Acceleron Standard: \$13.20/unit; Intego Suite: \$13.00/unit. Yield data from Syngenta trials. ROI figures represent an average based on 1,000 soybean acres.

 **CruiserMaxx® Vibrance® Beans**

 syngenta®

All photos are either the property of Syngenta or are used with permission.

Performance evaluations are based solely upon interpretation of public information and field observations.

©2017 Syngenta. **Important: Always read and follow label instructions. Some products may not be registered for sale or use in all states or counties. Please check with your local extension service to ensure registration status.** CruiserMaxx Vibrance Beans is an on-seed application of CruiserMaxx Vibrance alone or with Apron XL. Apron XL®, Cruiser®, CruiserMaxx®, Vibrance®, the Alliance Frame, the Purpose Icon and the Syngenta logo are trademarks of a Syngenta Group Company. Acceleron® is a registered trademark of Monsanto. Pioneer Premium Seed Treatment® is a registered trademark of Pioneer. Intego™ is a trademark of Valent.