

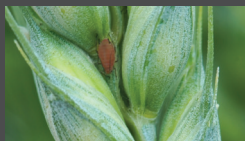
Wheat Seed Treatments

A subjective comparison of different wheat seed treatment products

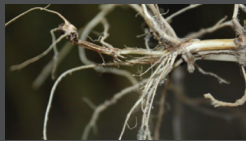
Efficacy Rating Scale: **E** Excellent **G** Good **F** Fair **P** Poor — Not Applicable

Trade Name	Rates Fl. oz/ Cwt	Crop safety	Loose smut	Seed-Borne & Soil-Borne Common Bunt	Seed-Borne Fusarium scab	Dwarf Bunt	Common root rot	Pythium Damp-ing-Off	Rhizoc-tonia	Wire-worm	Aphids/ Green-bugs (BYDV)	Hessian fly
Vibrance® Extreme Fungicide	2.8 to 5.6	E	E	E	F	E	G	E	E	—	—	—
CruiserMaxx® Vibrance® Fungicide + Insecticide Cereals	5 to 10	E	E	E	F	E	G	E	E	G	P	P
Cruiser® 5FS Insecticide	0.25 to 1.33	E	—	—	—	—	—	—	—	G	E	G
Maxim® 4FS Fungicide	0.06 to 0.16	E	—	—	E	—	—	—	F	—	—	—
Raxil® Pro MD	5 to 7.5	G	E	E	G	P	G	G	F	—	—	—
Stamina® F4	4.6	E	E	E	G	P	F	G	E	—	—	—
NipsIt® Suite	5 to 7.5	E	E	E	F	P	F	G	F	G	—	—
Sativa™ IMF Max	3.4 to 5	E	E	E	E	P	G	G	F	G	G	—

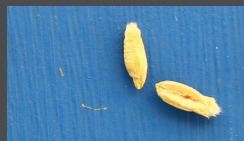
Key wheat pests



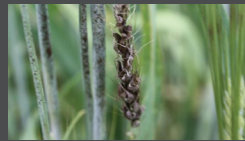
Aphids



Common root rot



Fusarium

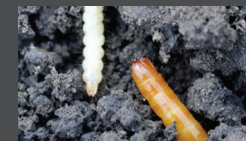


Loose smut



Untreated Vibrance

Rhizoctonia



Wireworms



Performance assessments are based upon results or analysis of public information, field observations and/or internal Syngenta evaluations.

©2018 Syngenta. Important: Always read and follow label instructions. Some products may not be registered for sale or use in all states or counties. Please check with your local extension service to ensure registration status. Cruiser®, CruiserMaxx®, Maxim®, Seedcare™, Vibrance®, the Alliance Frame, the Purpose Icon and the Syngenta logo are trademarks of a Syngenta Group Company. All other trademarks used herein are the property of their respective owners.