



## An Additional Opportunity to Expand Yield through Disease Control and Plant Performance

**Quadris® fungicide applied early positions corn for maximum yield at a critical growth stage through preventive disease control, better stress response and increased Plant Performance™.**

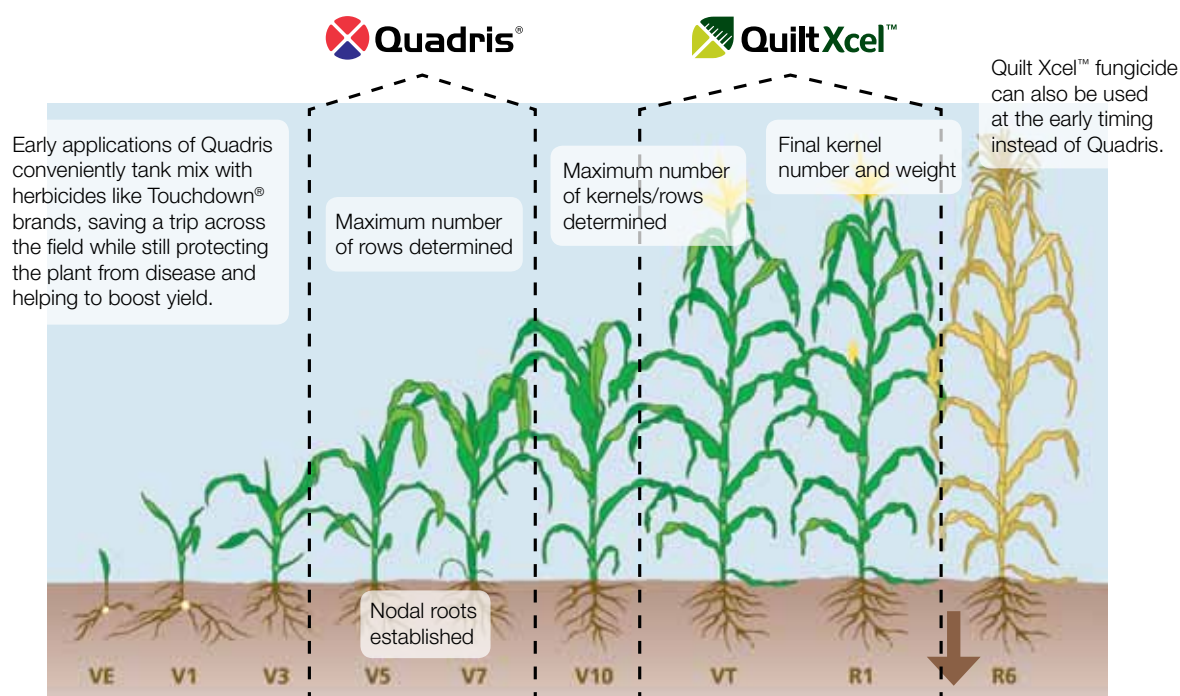
### Why an Earlier Application Timing?

Early-season applications of Quadris provide preventive disease control and enhanced Plant Performance while the corn leaf and ear shoots are being determined at the early vegetative stages.

### Why Quadris Early?

Quadris moves in the plant to provide more complete disease protection and Plant Performance allowing the corn plant to utilize more energy to produce bigger ears and more kernels around.

### When to Apply



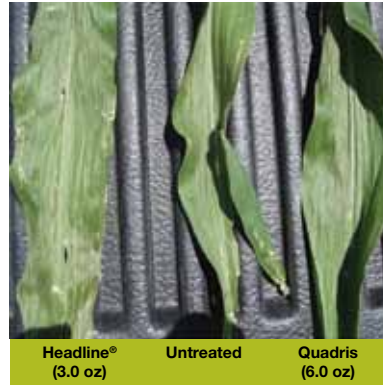
For maximum Plant Performance use Quadris early followed by Quilt Xcel.

# Quadris Fungicide: The Clear Choice

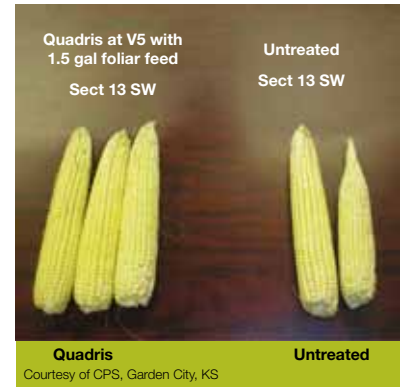
These images depict the performance of the early Quadris application.

## Benefits of Quadris Fungicide Applied Early

- Improves plant growth that results in higher yields, increases water use efficiency that helps the plant grow and preserves green leaf area to help maximize yield.
- Provides broad-spectrum preventive disease control even to new plant growth because of the systemic activity of the Quadris X-Factor™.
- Utilizes full, recommended rates to provide longer-lasting control and Plant Performance.

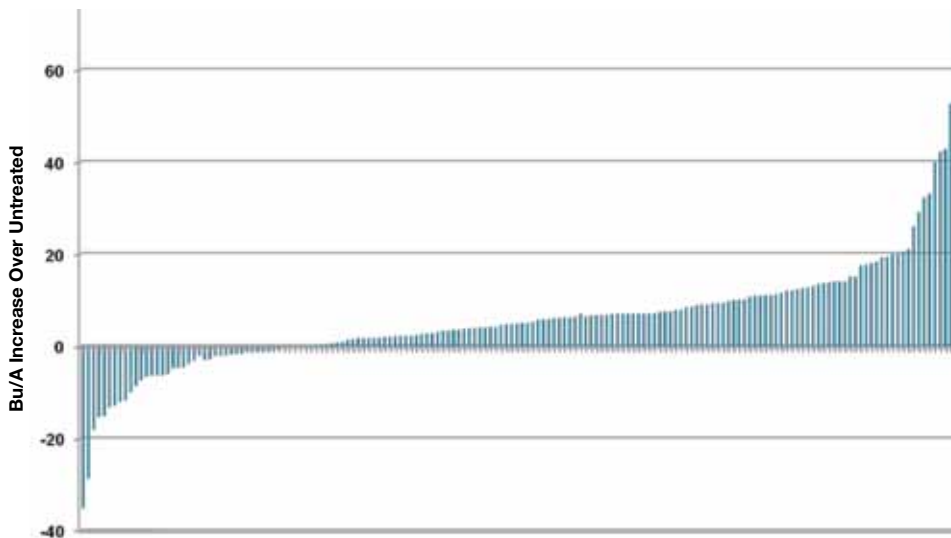


In the photo above, the corn is at the R1 growth stage. The fungicides were applied on June 7 at V5. The Quadris-treated leaves are greener in color and the leaf looks healthier.



In the photo above, the Quadris-treated corn ears are larger in size compared to the untreated ears.

## Quadris Applied Early Yielded an Average of 6 bu/A More than the Control



169 On-Farm Trials

## Use Recommendations for Early Applications

Syngenta recommends a full rate of Quadris fungicide at 6.0 oz/A be applied during the early vegetative growth stages for longer-lasting control and Plant Performance benefits.

The early application may be followed by Quilt Xcel fungicide at 10.5 oz/A at the R1 growth stage.

Quilt Xcel at 10.5 oz/A can be used for additional curative disease control and resistance management.



For more information, visit [www.FarmAssist.com](http://www.FarmAssist.com), [www.PlantPerformance.com](http://www.PlantPerformance.com), or call the Syngenta Customer Center at 1-866-SYNGENT(A) (796-4368).

©2011 Syngenta Crop Protection, LLC, 410 Swing Road, Greensboro, NC 27409. Important: Always read and follow label instructions before buying or using Syngenta products. The instructions contain important conditions of sale, including limitations of warranty and remedy. Plant Performance™, Quadris®, Quadris X-Factor™, Quilt Xcel™, Touchdown® and the Syngenta logo are trademarks of a Syngenta Group Company. Headline® is a registered trademark of BASF.